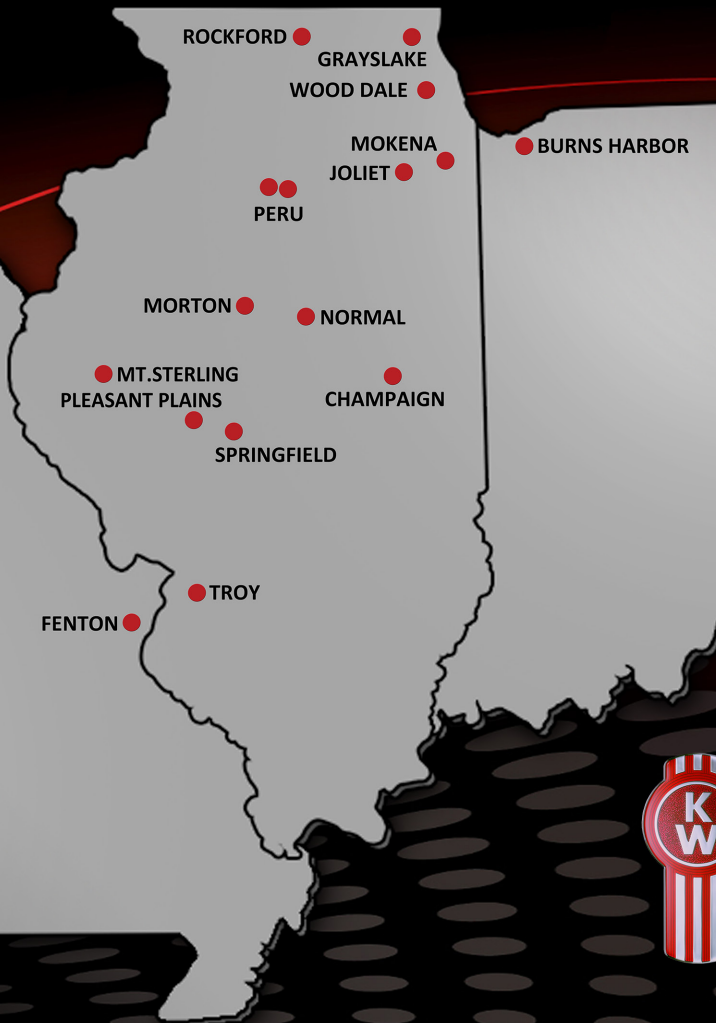




# CIT TRUCKS

# About Us



# ABOUT US



## OUR BEGINNING

CIT Trucks was founded and incorporated on November 6, 1975 as Central Illinois Kenworth Sales and Service, Inc. Headquartered in Normal, Illinois, the company has expanded significantly, now operating four truck franchises across sixteen locations. With a workforce exceeding 900 employees, its presence spans Illinois (Normal, Peru, Springfield, Pleasant Plains, Morton, Champaign, Wood Dale, Joliet, Troy, Grayslake, Rockford, and Mokena), as well as Missouri (Fenton) and Indiana (Burns Harbor).

## WHO WE ARE

CIT Trucks is your comprehensive commercial truck solution. We represent leading brands like Kenworth, Volvo, Mack, and Isuzu Trucks, offering a full range of services. Find your perfect truck from our selection of new and used vehicles. We maintain a vast parts inventory to keep your trucks running smoothly. Our expert technicians provide top-tier service and maintenance, and our state-of-the-art body shop handles any repairs. Need Flexible options? We offer in-house rental and leasing through Central Truck Leasing and financing solutions through

# ABOUT US

## CULTURE

We are proud of CIT Trucks' heritage that is rooted in integrity and hard work. Our success is due to the commitment of our employees and our continued search for promising, talented individuals who build on our strong foundation and contribute to the company's continued success.



[www.cittrucks.com](http://www.cittrucks.com)



# LOCATIONS



## Corporate

305 W. Northtown Road  
Normal, IL 61761  
(309) 445-8100  
Monday-Friday: 8am - 5pm

## Normal



200 W. Northtown Road  
Normal, IL 61761  
(800) 322-5017  
Monday-Friday: 7am - 12am  
Saturday: 7am - 3:30pm

## Mt. Sterling



979 840 E. North St.  
Mt. Sterling, IL 62353  
(309) 445-8777  
Monday-Friday: 7am - 3:30pm  
Saturday: Closed

## Burns Harbor



1171 Lions Drive  
Burns Harbor, IN 63026  
(844) 300-0045  
Monday-Friday: 7am - 12am  
Saturday: 7am - 3:30pm

## Peru



2650 May Road  
Peru, IL 61354  
(800) 331-1098  
Monday-Friday: 7am - 11pm  
Saturday: 7am - 3:30pm

## Peru Mack



3030 May Road  
Peru, IL 61354  
(844) 224-4747  
Monday-Friday: 7am - 6pm  
Saturday: 7am - 12pm

## Springfield



3440 Gatlin Drive  
Springfield, IL 62707  
(800) 699-9248  
Monday-Friday: 7am - 12am  
Saturday: 7am - 3:30pm

## Morton



1945 N. Morton Avenue  
Morton, IL 61550  
(877) 878-2505  
Monday-Friday: 7am - 12am  
Saturday: 7am - 3:30pm

## Champaign



148 E Leverett  
Champaign, IL 61822  
(800) 515-7066  
Monday-Friday: 7am - 12am  
Saturday: 7am - 3:30pm

## Mokena



8300 Springlake Drive  
Mokena, IL 60448  
(855) 464-9700  
Monday-Friday: 7am - 12am  
Saturday: 7am - 3:30pm

## Wood Dale



101 Mittel Drive  
Wood Dale, IL 60191  
(866) 295-0995  
Monday-Friday: 7am - 12am  
Saturday: 7am - 3:30pm

## Joliet



4040 Mound Road  
Joliet, IL 60436  
(800) 938-8701  
Monday-Friday: 7am - 12am  
Saturday: 7am - 3:30pm

## Rockford



4301 N. Bell School Road  
Loves Park, IL 61111  
(800) 533-3527  
Monday-Friday: 7am - 12am  
Saturday: 7am - 3pm

## Grayslake



22570 W. Highway 60  
Grayslake, IL 60030  
(844) 223-6665  
Monday-Friday: 7am - 6:30pm  
Saturday: 7am - 12pm

## Troy



2120 Liebler Road  
Troy, IL 62294  
(855) 931-4300  
Monday-Friday: 7am - 12am  
Saturday: 7am - 3:30pm

## Fenton



185 Soccer Park Road  
Fenton, MO 63026  
(844) 343-6900  
Monday-Friday: 7am - 12am  
Saturday: 7am - 3:30pm

## Pleasant Plains



207 Illinois 125  
Pleasant Plains, IL 62677  
(217) 626-1512  
Monday-Friday: 7am - 5pm  
Saturday: 7am - 12pm



# FAST FACTS



**Serving Territories in  
IL, IN, MO**



**19 Total Locations**



**Over 4,000 Trucks  
Sold Annually**



**Over 360 Service Bays**



**\$38 million On-Hand  
Parts Inventory**



**900+ Employees**

# FAST FACTS

## BENEFITS

- 401(k) retirement plan
- Three Health Insurance Plans
- Dental and Vision Plan
- Health Savings Account (HSA)
- Flexible Spending Accounts
- Short & Long-Term Disability Insurance
- Base Life & Voluntary Life Insurance
- Paid Holidays & Paid Time Off
- Employee Referral Bonus
- Competitive Salary
- On the Job and OEM Training
- Department Bonus for Qualifying Positions
- Tool Loan Program for Qualifying Positions
- Advancement Opportunities



[www.cittrucks.com](http://www.cittrucks.com)



# TRUCK SALES

# CIT TRUCKS



## NEW TRUCKS

CIT Trucks carries a large inventory of new trucks with the latest and most advanced technology available in the industry. Our sales professionals are equipped to quickly and accurately customize trucks to each customer's unique specifications. We are a franchised dealer for the following product lines:

- Kenworth Heavy Duty (Class 8)
- Kenworth Medium Duty (Class 3-7)
- Volvo
- Mack
- Isuzu

## USED TRUCKS

If you're looking for a late-model, road-ready used truck, you'll find a large selection at CIT Trucks. Each of our locations carries a full inventory of fully reconditioned pre-owned trucks, many of which are still under OEM or component manufacturer warranty. We also offer optional extended warranties.



# TRUCK SALES

At CIT Trucks, fleet owners, owner/operators, and local distributors can take advantage of competitive prices, a diversified truck product line, creative financing programs, competitive insurance packages, along with additional preventive maintenance and warranty programs.

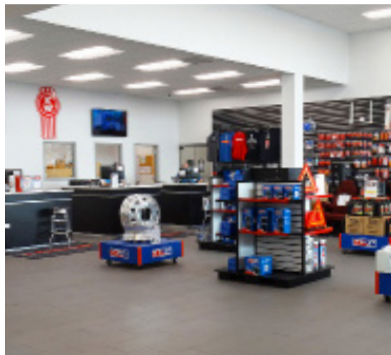
These benefits minimize operating cost and maximize resale value, which keeps your business running efficiently and profitably.



[www.cittrucks.com](http://www.cittrucks.com)



# PARTS



## OUR PARTS DIVISION PROVIDES:

- A staff of over 225 experienced parts professionals
- More than \$38 million in on-hand parts inventory
- 14 retail parts locations
- Dedicated route sales
- 2 Central Distribution Centers
- Authorized dealer for: Kenworth, Volvo, Isuzu, Mack, Caterpillar, Cummins and PACCAR parts
- More than 200 additional product lines
- Competitive prices through volume discount purchasing
- Accessories and parts for all makes and models of tractors, trailers and trucks
- Parts delivery service provided by experienced parts professionals
- Convenient on-site parts service Monday through Saturday at each of our locations
- A 24-hour toll-free number for parts assistance
- Computerized inventory system for efficient order fulfillment
- A large parts warehouse along with a well-stocked parts display area

# PARTS

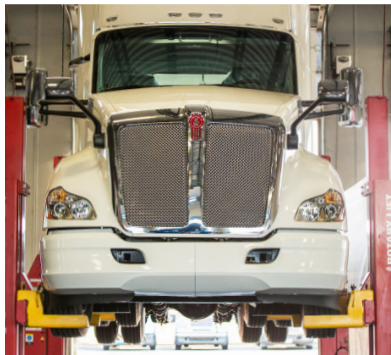
**As one of the largest retail parts outlets in the Midwest,** CIT Trucks provides customers with excellent parts availability, prompt service and competitive prices. With more than \$38 million in available OEM and aftermarket inventory, our volume purchasing power keeps prices down. We offer customers the widest selection of parts and accessories for all makes and models of trucks, tractors and trailers. Our parts department is dedicated to maintaining proper stocking levels that allows us to locate and process your parts order quickly and efficiently.



[www.cittrucks.com](http://www.cittrucks.com)



# SERVICE



## OUR SERVICE DIVISION PROVIDES:

- A staff of more than 300 highly-skilled technicians
- Free estimates
- Up-to-date repair procedures via online access to service manuals and technical information from Kenworth, Volvo, Mack, Isuzu, Autocar, PACCAR, Caterpillar, Cummins and Detroit
- Quick claims processing via online access to OEMs
- Extended hours of service
- Computerized repair history summaries for any unit in your fleet
- Specialized tooling for the smallest repair to major overhauls
- 200,000+ square feet devoted to medium and heavy-duty truck service
- Over 360 service bays
- Authorized warranty repair for Caterpillar, Cummins, PACCAR, Volvo Power, Mack, Isuzu and Autocar
- The latest in engine diagnostic equipment and specialized retooling
- Easy access, spacious parking, and trailer pads
- Drivers' lounge, shower room, taxi service to and from local hotels and other onsite amenities
- Dedicated service bays for quick lube and PM maintenance

# SERVICE

**At CIT Trucks,** we have the people, the technology, and the facilities to ensure the highest quality repair and maintenance service. Our factory-trained staff of more than 300 technicians provides experienced, specialized service on all makes and models of trucks, tractors and trailers. All technicians have online access to service manuals and technical information, which ensures that the most efficient and effective repair procedures are followed.



[www.cittrucks.com](http://www.cittrucks.com)

# BODY SHOP



## WE PROVIDE THE FOLLOWING BODY SHOP SERVICES:

- 32 bay state-of-the-art shop facility
- 27 Full-time body shop technicians
- Fast and complete estimates
- A highly experienced team of professional body craftsmen
- Complete structural repair and rebuilding on all makes and models of tractors and trucks
- Spray/bake paint booth replicating OEM procedure
- Complete in-house paint mixing of Axalta products; factory original finishes on most models
- Computerized and laser-guided total alignment system for the diagnosis and correction of any alignment problem
- Bee-Line truck frame machine and press system for complete chassis and suspension correction on heavy-duty vehicles of all types
- Abrasive blast room and frame painting
- Frame lengthening and shortening
- Wheel polishing
- Insurance claim administration for all insurance companies
- Convenient hours and access

# BODY SHOP

**At CIT Trucks,** we are equipped to handle all types of truck reconditioning, from fender benders to complete structural rebuilding. With our computerized alignment system, heavy-duty frame alignment machine, and in-house paint-mixing capabilities, we have the tools to get the job done. Body shop services are available at our Normal, Grayslake and Peru dealerships with technicians that are skilled craftsmen, averaging more than 15 years in the industry.



[www.cittrucks.com](http://www.cittrucks.com)



# LEASING & RENTAL



## LEASING

### We Provide:

- Custom Built Trucks
- All Tires and Towing
- Full Maintenance Program
- Over the Road Service
- Personalized Management
- All Financing and Interest
- Substitute Vehicle for Mechanical Failure

### Included with Your Lease:

- Annual DOT Inspections
- Bi-Annual State Inspections
- DOT Compliance
- License Services
- Fuel Tax Reporting
- No Residual Risk
- No Maintenance Risk

## RENTAL

### Coverage For:

- Emergency Shipments
- Breakdowns
- Peak Season Demands
- Unexpected Fluctuations
- P TO Trucks Available

### Top Quality Rentals:

- From 1 Day to 12 Months
- Reputable Truck Brands
- Short Term Commitment
- Includes All Leasing Services
- ELD Compliant



**At Central Truck Leasing,** we realize that you need to make the best decision for your business. Backed by our Rental & Leasing Specialists, Central Truck Leasing is committed to Offering Quality Products for Long-Term Lease Options and Short Term Rentals. We are dedicated to serving our customers with excellence by partnering with you to reach your business goals.



[www.cittrucks.com](http://www.cittrucks.com)

# FINANCE



## PRODUCTS WE PROVIDE

### Loans:

- Depreciation expense
- Ownership at maturity
- Interest expense

### TRAC Leases:

- Lease to purchase
- Low cost of entry
- Low/Flexible payments
- Known purchase option at lease end
- Tax deductible rental

### FMV Leases:

- "Walk Away"
- Low cost of entry
- Low payments
- Tax deductible rental payments
- Off Balance sheet financing
- Predetermined return conditions

## EQUIPMENT WE FINANCE

### New/Used Tractors:

- Sleeper
- Day Cab

### Straight Trucks:

- Box
- Flat Bed
- Dump
- Tanker
- Plow
- Expeditors

### Trailers:

- Flatbed
- Dry/Reefer Van
- Tanker
- Dump



**The transportation industry** is filled with companies and people from all walks of life and seasons of growth. At Central Truck Finance, LLC, we pride ourselves on being able to provide you with the most satisfactory finance products to meet all of your business needs.

*Final credit terms determined upon completion of credit review.*



[www.cittrucks.com](http://www.cittrucks.com)



# FUTURE CAREERS



## SALES

New Truck Sales Manager  
Used Truck Sales Manager  
New Truck Sales Rep  
Used Truck Sales Rep  
Engine Sales  
Sales Intern  
Sales Coordinator  
Sales Driver

## PARTS

Parts Manager  
Parts and Systems Analyst  
Parts Analyst  
Parts Outside Sales Representative  
Parts Counter Sales Representative  
Parts Back Counter Sales Representative  
Parts Inventory Control Clerk  
Parts Purchaser  
Parts Warehouse Supervisor  
Parts Warehouse Worker and Delivery Driver

## SERVICE

Service Manager  
Service Foreman  
Service Advisor  
Service Administrator  
Service Technician Class A, B, C, D  
Service Lube Technician  
Service Technician Apprentice  
Service Detailer  
Service Janitor  
Service Driver

## BODY SHOP

Body Shop Manager  
Body Shop Foreman  
Service Administrator  
Body Shop Estimator  
Detailer  
Painter  
Paint Prepper  
Service Technician Class A, B, C, D  
Sandblast Technician  
Alignment Technician

## LEASING

Regional Sales Manager  
General Manager  
Fleet Maintenance Manager  
Leasing Sales Representative  
Fleet Coordinator  
Lease Coordinator  
Rental Coordinator  
Leasing Technician

## FINANCE

Finance and Insurance Representative

## OFFICE

Regional General Manager  
General Manager  
Office Coordinator  
Receptionist

## CORPORATE

Chief Financial Officer  
Chief Information Officer  
Director of Human Resources  
Recruiter  
HR Generalist  
Payroll Coordinator  
Controller  
Assistant Controller  
Staff Accountant  
Junior Accountant  
Accounting Intern  
Credit Manager  
Accounts Receivable Clerk  
Accounts Payable Clerk  
Corporate Sales Administrator  
Corporate Sales Coordinator  
Warranty Manager  
Warranty Coordinator  
IT Manager  
Senior Systems Engineer  
IT Network Analyst  
IT Systems Analyst  
IT Support Analyst  
IT Intern  
Director of Marketing  
Marketing Coordinator  
Business Analyst  
Marketing Intern





For More Information, Visit Us At  
[WWW.CITTRUCKS.COM](http://WWW.CITTRUCKS.COM)

## CIT Trucks - Corporate Office

305 W Northtown Road, Ste A  
Normal, IL 61761  
309.445.8100



[/cittrucks](https://www.facebook.com/cittrucks)



[company/cittrucks](https://www.linkedin.com/company/cittrucks)



[@cittrucks](https://twitter.com/cittrucks)



[@cittrucks](https://www.instagram.com/cittrucks)